



Access and Language Options



Login/Register

[Home](#)

[About Us](#)

[Places to Go](#)

[How to use DisabledGo](#)

[News and Blog](#)

[Site Map](#)

You Are Here: [Home](#) > [Places to Go](#) > Venue



Holiday Inn Haydock M6 J23



Guide Last Updated: 13/10/2017



[Explain These Icons](#)

[Add To My Trip](#)

[View the Access Guide](#)

[Something Changed? Click Here](#)



Lodge Lane, Haydock, WA12 0JG

0871 942 9039

<https://www.ihg.com/holidayinn/hotels/gb/en/haydock/wrtha/hoteldetail>

Venue Reviews

Average Rating: ★★★★★

[Review this Venue](#)

Access Guide

Hotel Introduction

Collapse -

Related Access Guide(s)

Collapse -

- [For the Holiday Inn Haydock M6 J23 - Leisure Facilities DisabledGo access guide please click here \(new tab\).](#)

Hotel Information

Collapse -

- The hotel has its own parking facilities.
- This hotel has its own restaurant located on the ground floor.
- Conference/meeting facilities are available.
- The conference/meeting facilities are located on the ground floor.

Room Information

Collapse -

- The hotel has 138 rooms in total.
- There is an/are accessible room(s) within the hotel.
- The accessible room(s) is/are located on the ground floor.
- The hotel has 4 accessible room(s) with accessible ensuite facilities.
- There is/are 4 accessible room(s) with a bath.

[Cookie Policy](#)

at adjoining room(s) available for the accessible room(s).

- The accessible rooms are 35m - 58m from the hotel entrance.
- There is a/are standard room(s) available on the ground floor.
- There is an/are adjoining room(s) available for the standard room(s).
- Rooms on other floors are accessed via stairs or lift.

Auxiliary Aids

Collapse -

- Vibrating pillows with flashing beacons are available on request.
- Bed raisers are not available on request.
- Bath mats are available on request.
- All televisions have subtitles available.

Getting Here

Collapse -

By Road

Collapse -

- This hotel is located on the outskirts of Haydock, just off Junction 23 of the M6.
- This hotel has a car park which is free to all guests.

By Bus

Collapse -

- There is not a bus stop within 150 metres of the hotel.
- The nearest bus stop is located on the A49 (Lodge Lane) just before the entrance to the Holiday Inn.
- [For more information on Arriva Buses please click here \(opens new tab\).](#)

By Train

Collapse -

- The nearest Railway Station is Bryn.
- Bryn Station is approximately 2.5 miles away. There are bus and taxi routes to the hotel from the station.
- [For more information on National Rail please click here \(opens new tab\).](#)

Getting Help and Assistance

Collapse -

- There is a member of staff available for help and assistance.
- Staff receive disability awareness/equality training.
- Staff receive deaf awareness training.
- There is not a member of staff trained in British Sign Language.
- British Sign Language interpreters cannot be provided on request.
- The alternative formats documents can be provided in include; large print on request.
- There is an assistance dog toilet or toileting area at the venue/near by.
- The assistance dog toilet or toileting area is located outside the hotel.
- Water bowls for assistance dogs are available.
- There are not mobility aids available.

Parking

Collapse -

Parking

Collapse -

[Cookie Policy](#)

- The hotel does have its own parking facilities.
- The car park is located to the right of the hotel entrance.
- The car park type is open air/surface.
- The car park does not have a height restriction barrier.
- The car park does not have a barrier control system.
- The car park surface is tarmac.
- There is a/are Blue Badge parking bay(s) available.
- The Blue Badge bay(s) markings are faded.
- There is/are 4 designated Blue Badge parking bay(s) within the car park.
- The dimensions of the designated Blue Badge parking bay(s) surveyed are 335cm x 500cm (10ft 12in x 16ft 5in).
- There is a 120cm hatched zone around the Blue Badge parking bay(s).
- Parking spaces for Blue Badge holders do not need to be booked in advance.
- Clearly marked/signposted parent and child parking bays are not available.
- All parking spaces are provided on a first come first served basis.



Paying

Collapse -

- There are not parking charges for the car park.

Access from the Car Park

Collapse -

- The route from the car park to the entrance is accessible to a wheelchair user with assistance.
- Assistance may be required because there is/are dropped kerbs.
- The entrance is clearly visible from the car park.
- The surface on the approach to the entrance is tarmac and block paving.
- There is not a road to cross between the car park and the entrance.
- There is no tactile paving on dropped kerbs between the car park and the entrance.
- The nearest designated Blue Badge parking bay is approximately 35m (38yd 10in) from the hotel entrance.

Drop-off Point(s)

Collapse -

- There is a/are clearly marked drop-off point(s).
- The drop-off points(s) is/are located directly outside the hotel entrance.
- The route from the drop-off point(s) to the entrance is accessible to a wheelchair user with assistance.
- Assistance may be required because there is/are slopes/ramps.
- There is no tactile paving on dropped kerbs between the drop-off point(s) and the entrance.

[Cookie Policy](#)

Outside Access (Hotel Entrance)

Collapse -

Entrance

Collapse -

- This information is for the entrance located at the front of the building.
- The entrance area/door is clearly signed.
- There is ramped/sloped access at this entrance.
- There is a canopy or recess which provides weather protection at this entrance.
- The entrance door(s) does not/do not contrast visually with its immediate surroundings.
- The intercom is not in a suitable position to allow wheelchair users to gain access.
- The height of the intercom is 119cm (3ft 11in).
- The main door(s) open(s) automatically.
- The door(s) is/are double width.
- The width of the door opening is 124cm.
- There is a small lip on the threshold of the entrance, with a height of 2cm or below.
- There is a second set of doors.
- The door(s) open(s) automatically.
- The door(s) is/are double width.
- The width of the door opening is 114cm.
- There is a small lip on the threshold of the entrance, with a height of 2cm or below.



Ramp/Slope

Collapse -

- The ramp/slope is located on the path leading to the entrance.
- The gradient of the ramp/slope is slight.

Reception

Collapse -

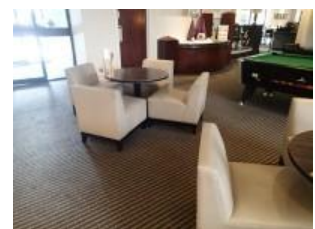
Reception

Collapse -

- The reception point is located to the right as you enter the hotel entrance.
- The reception point is approximately 4m (4yd 1ft) from the hotel entrance.
- The reception area/desk is clearly visible from the entrance.
- There is step free access to the reception point.
- There is a clear unobstructed route to the reception point.
- There are no windows, TVs, glazed screens or mirrors behind the reception point which could adversely affect the ability of someone to lip read.
- The reception counter is not placed in front of a background which is patterned.

[Cookie Policy](#)

the reception point are good.



- The height of the reception counter is medium height (77cm - 109cm).
- There is sufficient space to write or sign documents on the counter.
- There is not a lowered section of the counter.
- The counter is staffed.
- Clipboards can be provided to anyone who is unable to use the desk.
- There is a hearing assistance system at the reception point.
- The type of system is a fixed loop.
- The hearing assistance system is not signed.
- Staff are trained to use the system.
- Signs and universally accepted symbols or pictograms, indicating lifts, stairs, WCs, circulation routes and other parts of the building are provided in the reception area.
- The type of flooring in the reception area is carpet.



Reception Waiting Area

Collapse -

- There is a waiting area close to the reception point.
- Access to the waiting area is unobstructed.
- There is a mixture of seating with and without armrests.
- There is sufficient space for a wheelchair user to use the waiting area.

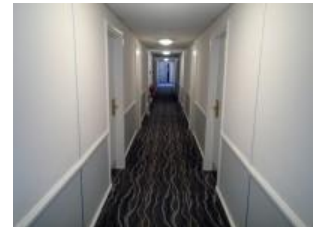
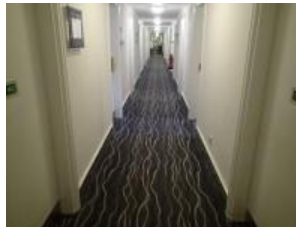
Getting Around

Collapse -

Access

Collapse -

- There is step free access throughout the building.



Circulation

Collapse -

- There are doors in corridors/walkways which have to be opened manually.
- The type of flooring in corridors/walkways is carpet.
- There is some flooring in corridors/walkways which includes patterns or colours which could be confusing or look like steps or holes to some people.
- There is good colour contrast between the walls and floor in all corridors/walkways.
- The lighting levels are varied.
- Access to other floors/levels is via stairs and lift.

Signage

Collapse -

- Wayfinding signage is provided.
- The colour, design and typeface of signs is consistent throughout the building.

Cookie Policy

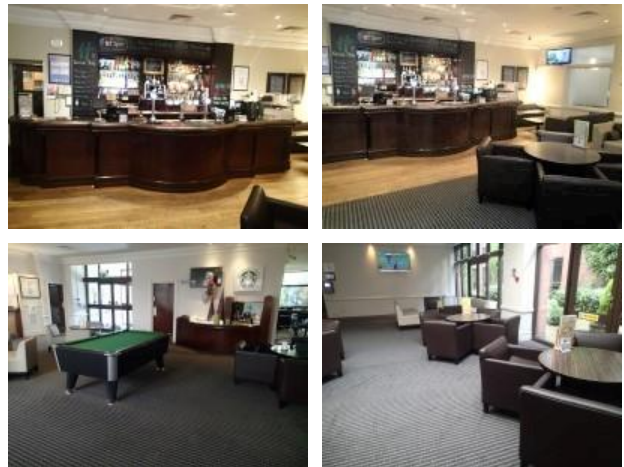
Collapse -

- This venue does play background music in public areas.
- Music is played in the reception and bar areas.

Eating and Drinking (Bar)

Collapse -

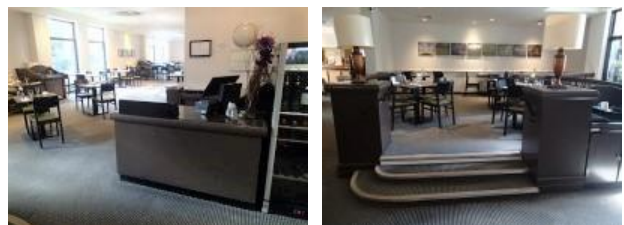
- The following information is for the bar.
- The bar is located on the ground floor, next to reception.
- There is step free access to the bar.
- Full table service is not available.
- Food and/or drinks are ordered from the service counter.
- Food and/or drinks can be brought to the table.
- The height of the service counter is medium height (77cm - 109cm).
- There is not a lowered section of the counter.
- There is not a hearing assistance system.
- There is step free access within the bar.
- There is ample room for a wheelchair user to manoeuvre.
- This area does play background music.
- The type of flooring in this area is carpet and vinyl.
- No tables are permanently fixed.
- No chairs are permanently fixed.
- Some chairs have armrests on both sides.
- The nearest table is approximately 3m from the entrance/opening.
- The nearest table is approximately 2m from the till/counter.
- The distance between the floor and the lowest table is 36cm.
- The distance between the floor and the highest table is 109cm.
- The standard height for tables is 65cm.
- Plastic/takeaway cups are not available.
- Plastic/takeaway cutlery is not available.
- Drinking straws are available.
- There are hand held menus and wall menus available.
- Menus are not available in Braille.
- Menus are not available in large print.
- Picture menus are not available.
- Menus are clearly written.
- Menus are presented in contrasting colours.
- The type of food served here is hot and cold meals and snacks.
- The lighting levels are varied.



Eating and Drinking (Restaurant)

Collapse -

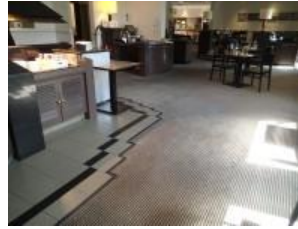
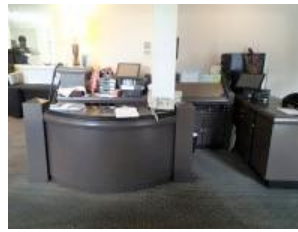
- The following information is for the restaurant.
- The restaurant is located on the ground floor, to the left as you face reception.
- There is step free access to the restaurant.
- Full table service is available.



[Cookie Policy](#)

istance system.

- There is ample room for a wheelchair user to manoeuvre.
- This area does play background music.
- The type of flooring in this area is carpet and tiles.
- No tables are permanently fixed.
- No chairs are permanently fixed.
- No chairs have armrests on both sides.
- The nearest table is approximately 3m from the entrance/opening.
- The standard height for tables is 72cm.
- Plastic/takeaway cups are not available.
- Plastic/takeaway cutlery is not available.
- Drinking straws are available.
- There are hand held menus available.
- Menus are not available in Braille.
- Menus are not available in large print.
- Picture menus are not available.
- Menus are clearly written.
- Menus are not presented in contrasting colours.
- The type of food served here is hot and cold meals and snacks.
- The lighting levels are varied.
- Access to the additional seating area is via 3 clearly marked steps.



Comments

Expand +

Conference / Meeting Facilities (Willow Suite 1)

Collapse -

- Conference/meeting facilities are available.
- The conference/meeting facilities are located on the ground floor.
- There is step free access to the conference/meeting facilities.
- The door opening width(s) is/are 75cm+ for the room(s).
- There is not a hearing assistance system for the room(s).
- There are no chairs with armrests on both sides within the room(s).
- There is sufficient space for a wheelchair user to manoeuvre within the room(s).
- The lighting levels in the room(s) are adjustable.



Comments

Collapse -

- Willow Suite consists of two areas; Suite 1 and Suite 2.
- Suites 1 and 2 can be opened up to create one larger suite.

Conference / Meeting Facilities (Syndicate Room)

Collapse -

- Conference/meeting facilities are available.
- The conference/meeting facilities are located on the ground floor.
- There is step free access to the conference/meeting facilities.

[Cookie Policy](#)

is/are 75cm+ for the room(s).

- There is not a hearing assistance system for the room(s).
- There is a/are chair(s) with armrests on both sides within the room(s).
- There is sufficient space for a wheelchair user to manoeuvre within the room(s).
- The lighting levels in the room(s) are good.



Conference / Meeting Facilities (Lowton Suite)

Collapse -

- Conference/meeting facilities are available.
- The conference/meeting facilities are located on the ground floor.
- There is step free access to the conference/meeting facilities.
- The door opening width(s) is/are 75cm+ for the room(s).
- There is not a hearing assistance system for the room(s).
- There are no chairs with armrests on both sides within the room(s).
- There is sufficient space for a wheelchair user to manoeuvre within the room(s).
- The lighting levels in the room(s) are good.



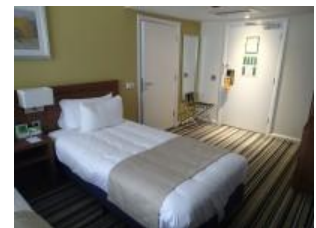
Accessible Room(s) (Rooms 113, 114, 117 and 118)

Collapse -

Accessible Room Information

Collapse -

- The details in this section relates to the accessible room(s) with a bath.
- This type of accessible room is located on the ground floor.
- There is step free access to this type of accessible room.
- All accessible rooms of this type have similar specifications.
- Guests need to open a door between the entrance and the room(s).
- The narrowest width of the corridor leading to the room surveyed was 132cm.



Bedroom Features

Collapse -

- The accessible room surveyed is located on the ground floor.
- The accessible room surveyed at the time of the visit was Room 117.
- There is step free access to the accessible room surveyed.
- There is written signage on or near the accessible room door.



- The fob/card reader height is 108cm.
- The width of the door is 88cm (2ft 11in).
- There are lowered spy holes available.
- The bed type is single.
- The bed height is not adjustable.
- The height of the bed is 56cm (1ft 10in).
- The measurement between the bed base and floor is 13cm (5in).
- The bed is not moveable.
- The room does have an unobstructed minimum turning space of 150cm x 150cm next to the bed.
- The height of the desk is 76cm.
- The desk is not height adjustable.
- The desk knee recess does not have the recommended dimensions of 70cm (height) x 50cm (depth).
- The height and depth of the knee recess is 72cm x 45cm.
- The room surveyed had a desk chair with armrests and an armchair.
- Wardrobes have been adapted to allow use from a seated position.
- Light switches are between 75cm and 120cm (4ft) from floor level.
- Electric sockets are between 40cm and 100cm (4ft) from floor level.
- The window control type(s) for the room is a/are standard lever(s).
- There is an emergency alarm in the room.
- The emergency pull cord alarm is out of reach (higher than 10cm (4") from floor).
- The emergency alarm rings to reception.
- There is a flashing fire alarm beacon within the room.
- The type of flooring is carpet.



Ensuite Facilities

Collapse -

- The ensuite door opens outwards.
- The door weight is heavy.
- The door is locked by a twist lock.
- The width of the door to the ensuite is 88cm (2ft 11in).
- The dimensions of the ensuite are 225cm x 295cm (7ft 5in x 9ft 8in).
- The ensuite does not have an unobstructed minimum turning space of 150cm x 150cm in front of the toilet seat.
- The ensuite has not got a non slip floor.
- There is an emergency alarm within the ensuite.
- The emergency pull cord alarm is within reach and fully functional.
- The emergency alarm rings to reception.
- There is a flashing fire alarm beacon within the ensuite.
- Disposal facilities are available.
- There is a/are pedal waste paper bin disposal units.

[Cookie Policy](#)

- The mirror is not placed at a lower level or at an angle for ease of use.
- There is a shelf immediately next to or behind the toilet.
- The shelf is between 90cm and 100cm.
- There is a wash basin.
- The wash basin cannot be reached from seated on the toilet.
- The wash basin is not placed higher than 74cm (2ft 5in).
- The height of the wash basin is 69cm.
- There are vertical wall-mounted grab rails on both sides of the wash basin.
- The tap type is lever.
- There is a mixer tap.
- There is not a soap dispenser.

Toilet Details

Collapse -

- The height of the toilet seat above floor level is 52cm (1ft 8in).
- The toilet has a covered cistern.
- There is a lateral transfer space.
- As you face the toilet pan the transfer space is on the right.
- The lateral transfer space is 114cm (3ft 9in).
- There is a flush, however it is not on the transfer side.
- There is not a spatula type lever flush.
- There is a dropdown rail on the transfer side.
- There is a/are wall-mounted grab rail(s) available.
- As you face the toilet, the wall mounted grab rails are on the left.
- There is not a vertical wall-mounted grab rail on the transfer side.
- There is a horizontal wall-mounted grab rail on the opposite side of the seat to the transfer space.
- There is a toilet roll holder.
- The toilet roll holder can be reached from seated on the toilet.
- The toilet roll holder is not placed higher than 100cm (3ft 3in).

Bath Details

Collapse -

- The ensuite has a bath.
- The height of the side of the bath from floor level is 50cm (1ft 8in).
- The tap type is lever.
- There is a mixer tap.
- There is a shower over the bath.
- The shower head is height adjustable.
- The shower control type is lever.
- There is a/are wall-mounted grab rail(s) available for the

[Cookie Policy](#)

Colour Contrast and Lighting

Collapse -

- The colour contrast between the external hotel room door and wall is poor.
- The colour contrast between the internal hotel room door and wall is poor.
- The colour contrast between the hotel room walls and floor is good.
- The colour contrast between the external ensuite door and wall is good.
- The colour contrast between the internal ensuite door and wall is poor.
- The colour contrast between the ensuite walls and floor is fair.
- The colour contrast between the drop down rail(s) and wall is good.
- The colour contrast between the wall-mounted grab rail(s) and wall is good.
- The contrast between the wash basin wall-mounted grab rail(s) and wall is good.
- The colour contrast between the bath wall-mounted grab rails and wall is good.
- The toilet seat colour contrast is poor.
- The lighting levels in the room are good.
- The lighting levels in the ensuite are good.

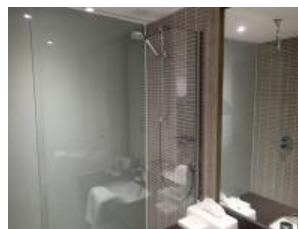
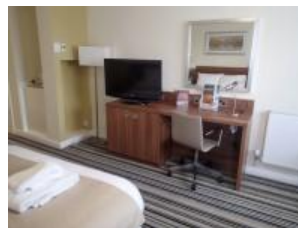
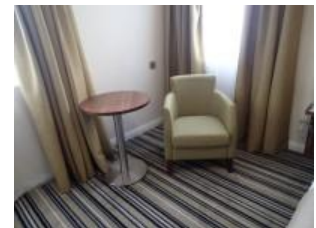
Standard Room(s) (Room 435)

Collapse -

Bedroom Features

Collapse -

- The room surveyed is located on the fourth floor.
- The room surveyed at the time of the visit was Room 435.
- There is step free access to the room surveyed, via lift.
- There is numbered signage on or near the room door.
- The width of the door is 77cm (2ft 6in).
- The bed type is double.
- The height of the bed is 55cm (1ft 10in).
- The measurement between the bed base and floor is 12cm (5in).
- Light switches are within 120cm (3ft 11in) from floor level.
- There is not an emergency alarm in the room.
- There is not a flashing fire alarm beacon within the room.
- The type of facilities within the ensuite include; a toilet, a wash basin and a shower.
- The ensuite door opens inwards.
- The width of the door to the ensuite is 70cm (2ft 4in).
- There is not an emergency alarm within the ensuite.
- There is not a flashing fire alarm beacon within the ensuite.
- The fan type is lever.

[Cookie Policy](#)


<p>Colour Contrast and Lighting</p> <p style="text-align: right;">Collapse -</p> <ul style="list-style-type: none"> • The colour contrast between the external hotel room door and wall is poor. • The colour contrast between the internal hotel room door and wall is poor. • The colour contrast between the hotel room walls and floor is good. • The colour contrast between the external ensuite door and wall is good. • The colour contrast between the internal ensuite door and wall is poor. • The colour contrast between the walls and floor in the ensuite is poor. • The lighting levels in the room are good. • The lighting levels in the ensuite are good.
--

Standard Room(s) (Executive Room 337)

Collapse -

<p>Bedroom Features</p> <p style="text-align: right;">Collapse -</p> <ul style="list-style-type: none"> • The room surveyed is located on the third floor. • The room surveyed at the time of the visit was Room 337. • There is step free access to the room surveyed, via lift. • There is numbered signage on or near the room door. • The width of the door is 77cm (2ft 6in). • The bed type is zip and link. • The height of the bed is 55cm (1ft 10in). • The measurement between the bed base and floor is 12cm (5in). • Light switches are within 120cm (3ft 11in) from floor level. • There is not an emergency alarm in the room. • There is not a flashing fire alarm beacon within the room. • The type of facilities within the ensuite include; a toilet, a wash basin and a shower. • The ensuite door opens inwards. • The width of the door to the ensuite is 70cm (2ft 4in). • There is not an emergency alarm within the ensuite. • There is not a flashing fire alarm beacon within the ensuite. • The tap type is lever. • There is a mixer tap.
--



<p>Colour Contrast and Lighting</p> <p style="text-align: right;">Collapse -</p> <ul style="list-style-type: none"> • The colour contrast between the external hotel room door and wall is poor. • The colour contrast between the internal hotel room door and wall is poor.

Cookie Policy etween the hotel room walls and

- The colour contrast between the external ensuite door and wall is fair.
- The colour contrast between the internal ensuite door and wall is poor.
- The colour contrast between the walls and floor in the ensuite is poor.
- The lighting levels in the room are good.
- The lighting levels in the ensuite are good.

Other Floors

Collapse -

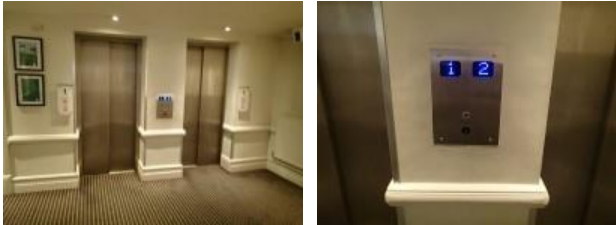
Stairs	Collapse -
<ul style="list-style-type: none"> • Stairs can be used to access other floors. • The stairs are for public use. • The stairs are located at the rear of reception. • The stairs are approximately 28m from the hotel entrance. • Signs indicating the location of the stairs are clearly visible from the entrance. • There are manual, light, single doors to enter and exit the stairwell on all floors. • The floors which are accessible by stairs are 1, 2, 3 and 4. • There are 15+ steps between floors. • The height of the step(s) is/are between the recommended 15cm and 18cm. • The going of the step(s) is/are not between the recommended 30cm and 45cm. • The steps are clearly marked. • There is a/are handrail(s) at the step(s). • The steps have a handrail on both sides. • Handrails are not at the recommended height (90cm-100cm). • Handrails do cover the flight of stairs throughout its length. • Handrails are easy to grip. • Handrails do not extend horizontally beyond the first and last steps. • There is a landing. • Clear signs indicating the facilities on each floor are provided on landings. • The lighting levels at the steps are good. 	



Lift

Collapse -

- There is a lift for public use.
- The lift is located in the main corridor, at the rear of reception.
- Signs indicating the location of the lift are clearly visible from the entrance.
- The lift is approximately 24m (26yd 9in) from the hotel entrance.



[Cookie Policy](#)

ssible by this lift are 1, 2, 3 and 4.

- Clear signs indicating the facilities on each floor are provided on lift lobby landings.
- There is a clear level manoeuvring space of 150cm x 150cm in front of the lift.
- Lift doors do contrast visually with lift lobby walls.
- The external controls for the lift are within 90cm - 110cm from the floor.
- The colour contrast between the external lift controls and the control plate is poor.
- The colour contrast between the external lift control plate and the wall is good.
- The clear door width is 80cm (2ft 7in).
- The dimensions of the lift are 108cm x 140cm (3ft 7in x 4ft 7in).
- There are no separate entry and exit doors in the lift.
- There is a mirror to aid reversing out of the lift.
- There is not a list of floor services available within the lift.
- The lift does have a visual floor indicator.
- The lift does have an audible announcer.
- The controls for the lift are within 90cm - 120cm from the floor.
- There is a hearing loop system.
- The lift does not have Braille markings.
- The lift does have tactile markings.
- The lighting levels in the lift are good.
- There is a/a similar lift(s) available.



Accessible Toilet(s)

Collapse -

- There is an/are accessible toilet(s) for public use.

Location and Access

Collapse -

- The accessible toilet surveyed is not for the sole use of disabled people.
- This accessible toilet is located on the ground floor, in the corridor to the right as you face reception.
- This accessible toilet is approximately 22m (24yd 2in) from the hotel entrance.
- There is step free access to the accessible toilet.



Features and Dimensions

Collapse -

- This is a shared toilet.
- A key is not required for the accessible toilet.
- There is pictorial signage on or near the toilet door.
- The door opens outwards.
- The door is heavy.
- The door is locked by a twist lock.
- The width of the accessible toilet door is 80cm (2ft 7in).
- The dimensions of the accessible toilet are 144cm x 236cm (4ft 9in x 7ft 9in).
- The accessible toilet does not have an unobstructed clear space of 150cm x 150cm.



[Cookie Policy](#)

- The toilet has a non slip floor.
- There is a lateral transfer space.
- As you face the toilet pan the transfer space is on the right.
- The lateral transfer space is 68cm (2ft 3in).
- There is a flush on the transfer side.
- There is not a spatula type lever flush.
- There is a dropdown rail on the transfer side.
- There is an emergency alarm.
- The emergency pull cord alarm is fully functional.
- There is not a flashing fire alarm beacon within the toilet.
- Disposal facilities are available in the toilet.
- There is a/are female sanitary and non-infectious waste disposal units.
- There is a/are coat hook(s).
- The height of the coat hook is 139cm from the floor.

Position of Fixtures

Collapse -

- There is a/are wall-mounted grab rail(s) available.
- As you face the toilet the wall-mounted grab rail(s) is/are on the left.
- There is not a vertical wall-mounted grab rail on the transfer side.
- There is a horizontal wall-mounted grab rail on the opposite side of the seat to the transfer space.
- There is a mirror.
- The mirror is not placed at a lower level or at an angle for ease of use.
- There is not a shelf next to the toilet.
- The toilet has a covered cistern.
- The height of the toilet seat above floor level is 49cm (1ft 7in).
- There is a toilet roll holder.
- The toilet roll holder can be reached from seated on the toilet.
- The toilet roll holder is placed higher than 100cm (3ft 3in).
- The height of the toilet roll holder is 107cm (3ft 6in).
- There is a wash basin.
- The wash basin cannot be reached from seated on the toilet.
- The wash basin is not placed higher than 74cm (2ft 5in).
- There are no vertical wall-mounted grab rails at the wash basin.
- The wash basin tap type is lever.
- There is a mixer tap.
- There is a soap dispenser.
- The soap dispenser cannot be reached from seated on the toilet.
- The height of the soap dispenser is 113cm.

nser.

[Cookie Policy](#)

- The towel dispenser cannot be reached from seated on the toilet.
- The towel dispenser is placed higher than 100cm (3ft 3in).
- The height of the towel dispenser is 112cm (3ft 8in).
- There is not a hand dryer.

Colour Contrast and Lighting

Collapse -

- The contrast between the external door and wall is poor.
- The contrast between the internal door and wall is poor.
- The contrast between the dropdown rail(s) and wall is good.
- The contrast between the wall-mounted grab rail(s) and wall is good.
- The toilet seat colour contrast is poor.
- The contrast between the walls and floor is poor.
- The lighting levels are low.

Baby Changing Facilities

Collapse -

- Baby changing facilities are located within the accessible toilet.
- The baby change table is not set against the wall, permanently fixed at 75cm from the floor.
- The baby change table is not height adjustable.
- The height of the baby change table once extended is 93cm (3ft 1in).

Standard Toilet(s)

Collapse -

- Standard toilet facilities are available.

Access to Standard Female and Male Toilet(s)

Collapse -

- The female and male toilet facilities that were surveyed are located on the ground floor, in the main corridor to the right as you face reception.
- The female and male toilets are approximately 25m (27yd 1ft) from the hotel entrance.
- There is step free access to the female and male toilet(s).
- There is pictorial signage on or near the toilet door.
- An ambulant toilet with wall-mounted grab rails is not available.
- The wash basin tap type is lever.
- There is not a flashing fire alarm beacon within the toilets.
- Lighting levels are good.
- There is a/are similar standard toilet(s) available.



Who we are...

- [Homepage](#)
- [About Us](#)
- [Access Icons](#)
- [FAQs](#)
- [Contact Us](#)
- [Press and Media](#)

The way we work...




- [Website Conditions](#)
- [Acceptable Use Policy](#)
- [Cookie Policy](#)
- [Privacy Policy](#)
- [Accessibility Policy](#)
- [Common Access Guide Terms Explained](#)

Our support for business

- [Disabled Charities and Useful Links](#)
- [FAQs Around Our Surveyors](#)

Follow @DisabledGo

Join us...

-  [Facebook](#)
-  [Twitter](#) 
- [Google+](#)
- [Switch to mobile site](#)



eCommerce Solutions by PureNet